



**QUICKSCREEN GATE
HAMPTONS COMBO
HINGED PEDESTRIAN GATE**

**FABRICATION
OVERVIEW**

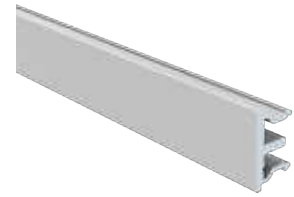




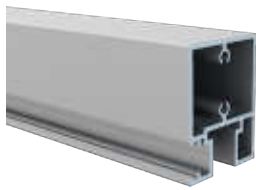
PVC Infill Panel



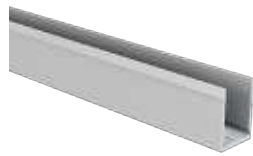
Gate Side Frame



Gate Screw Cover



65mm Top/
Mid/Bottom Rail



Gate Infill



Gate Infill
for PVC Panels



Gate Top Cap



76mm PVC Slat



PVC Top Slat Rail



PVC Bottom Slat Rail



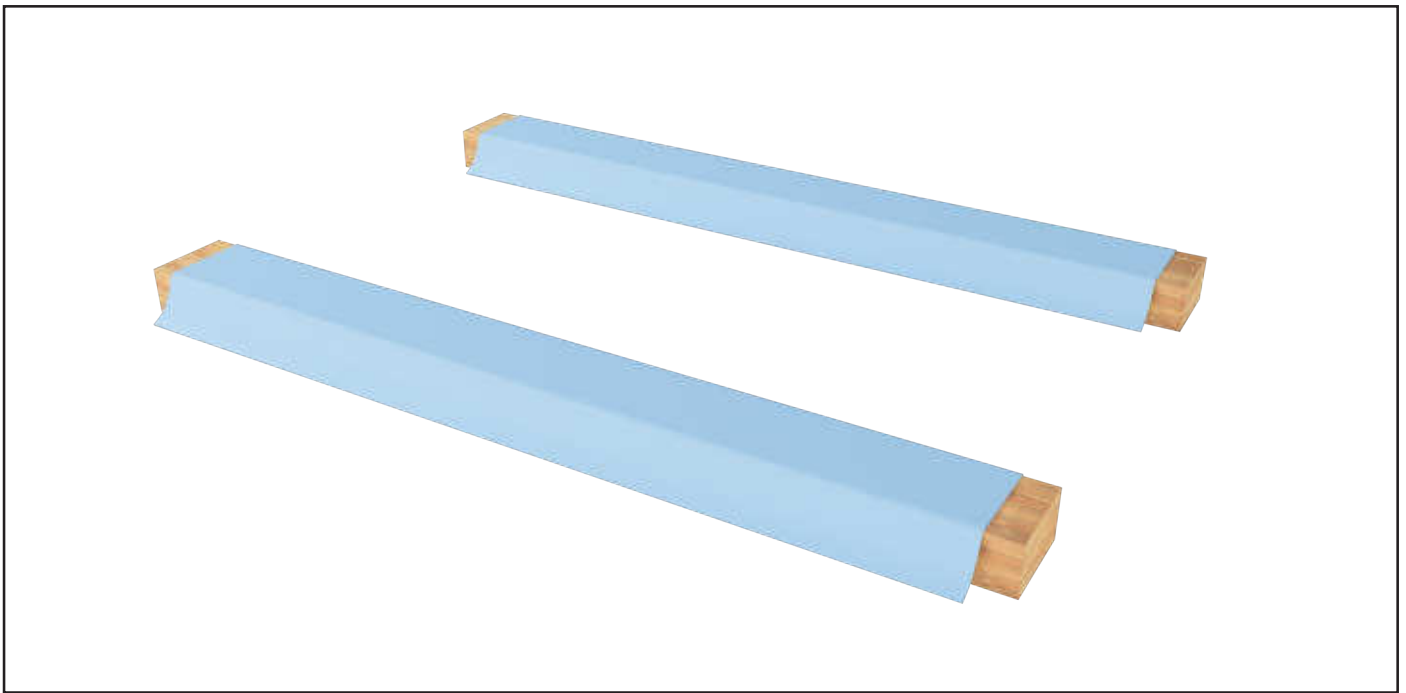
Joiner Blocks and
Screws for Top/Mid/
Bottom Rails



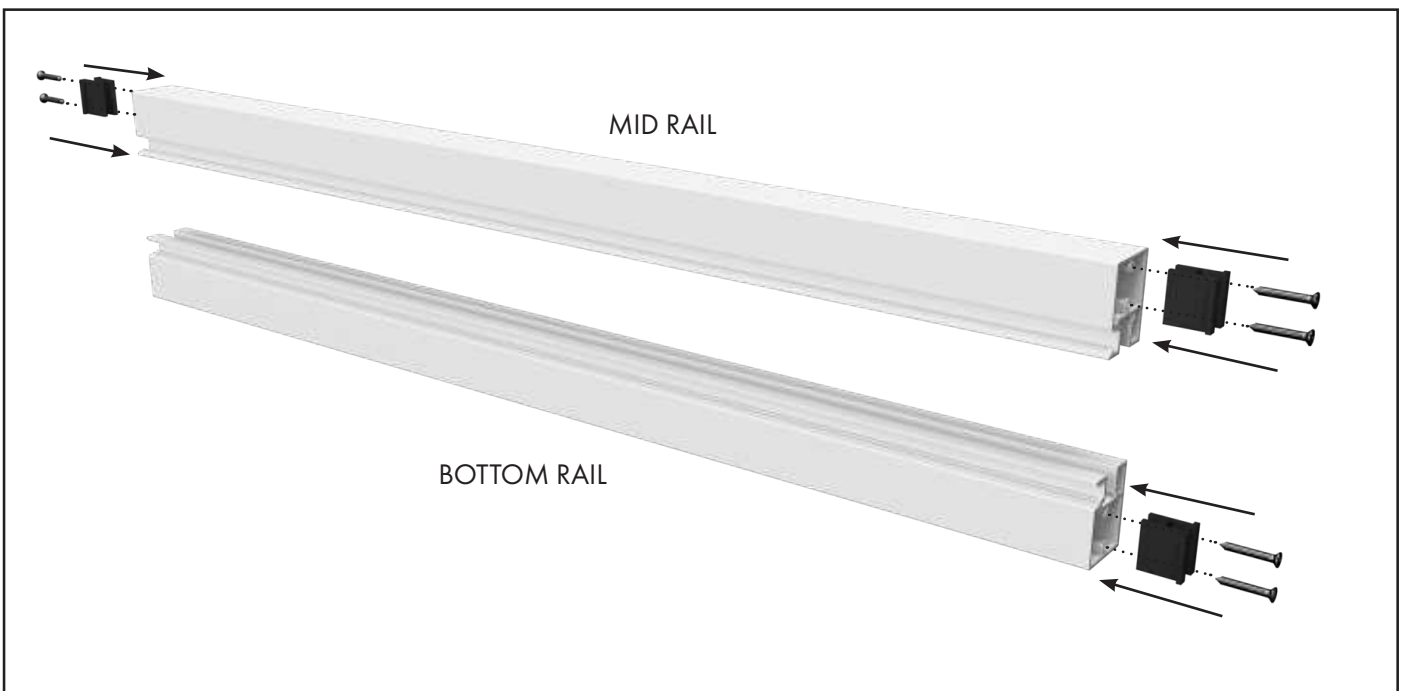
Panhead Screws



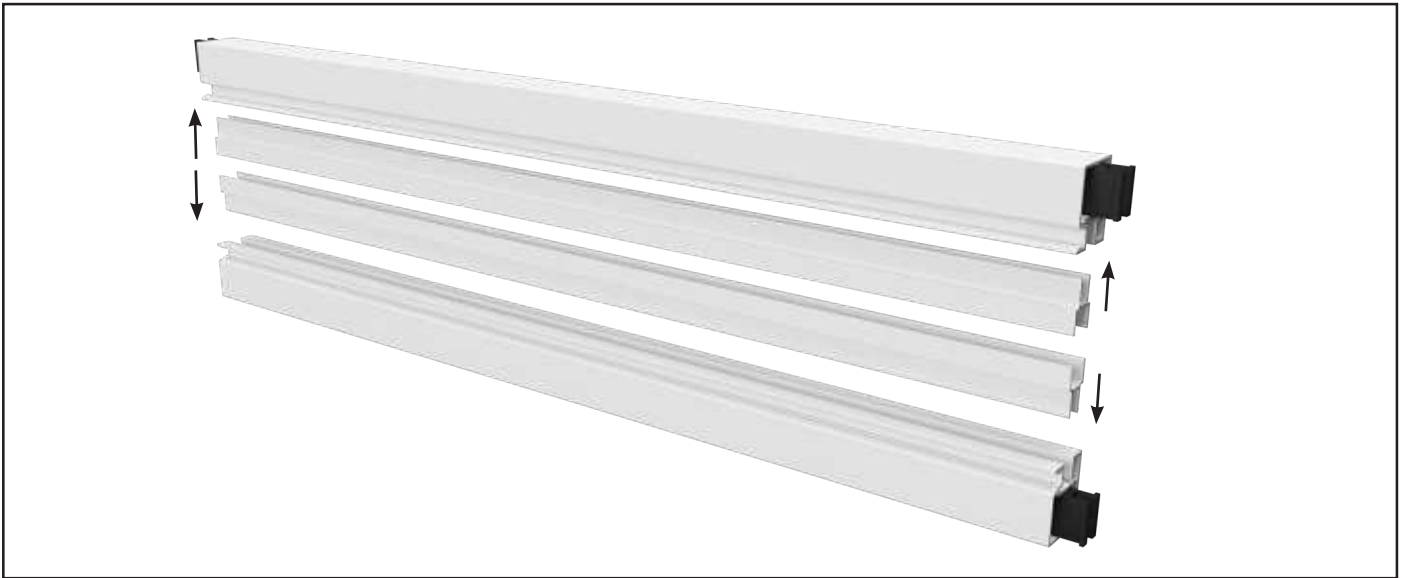
Self-drilling
Wafer Screws



- 1 Set up the gate fabrication area on a flat, protected surface or padded bearers



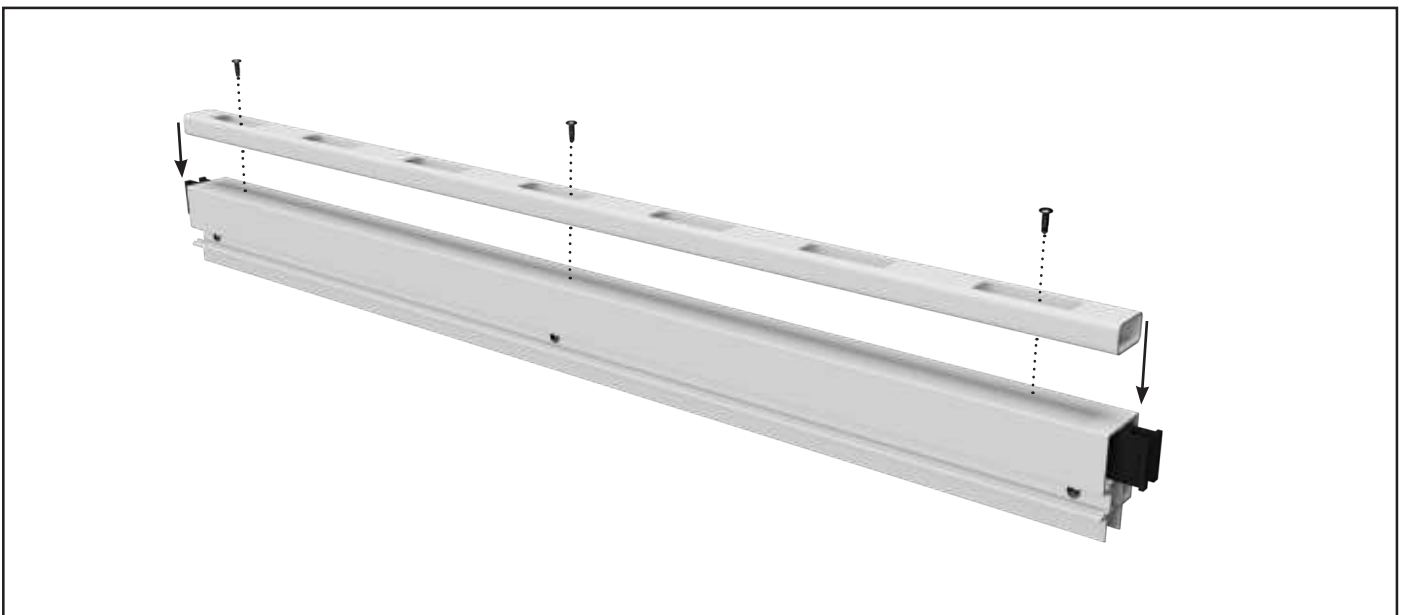
- 2 Attach the Joiner Blocks to both ends of the Mid Rail, and one end of the Bottom Rail, with two screws per Joiner block, using a Phillips head #3 driver bit on a low-torque/low-speed cordless drill setting.



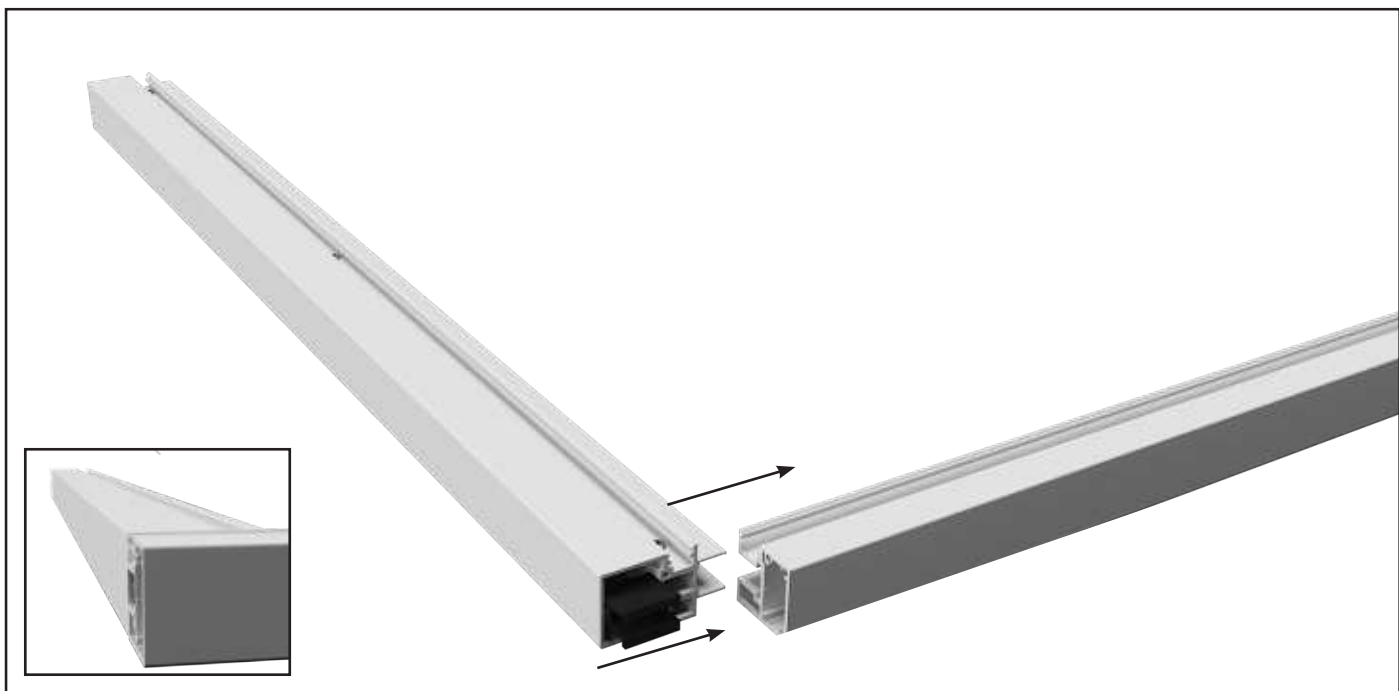
3 Insert Gate Infills for PVC Panels in to the Mid and Bottom Rails.



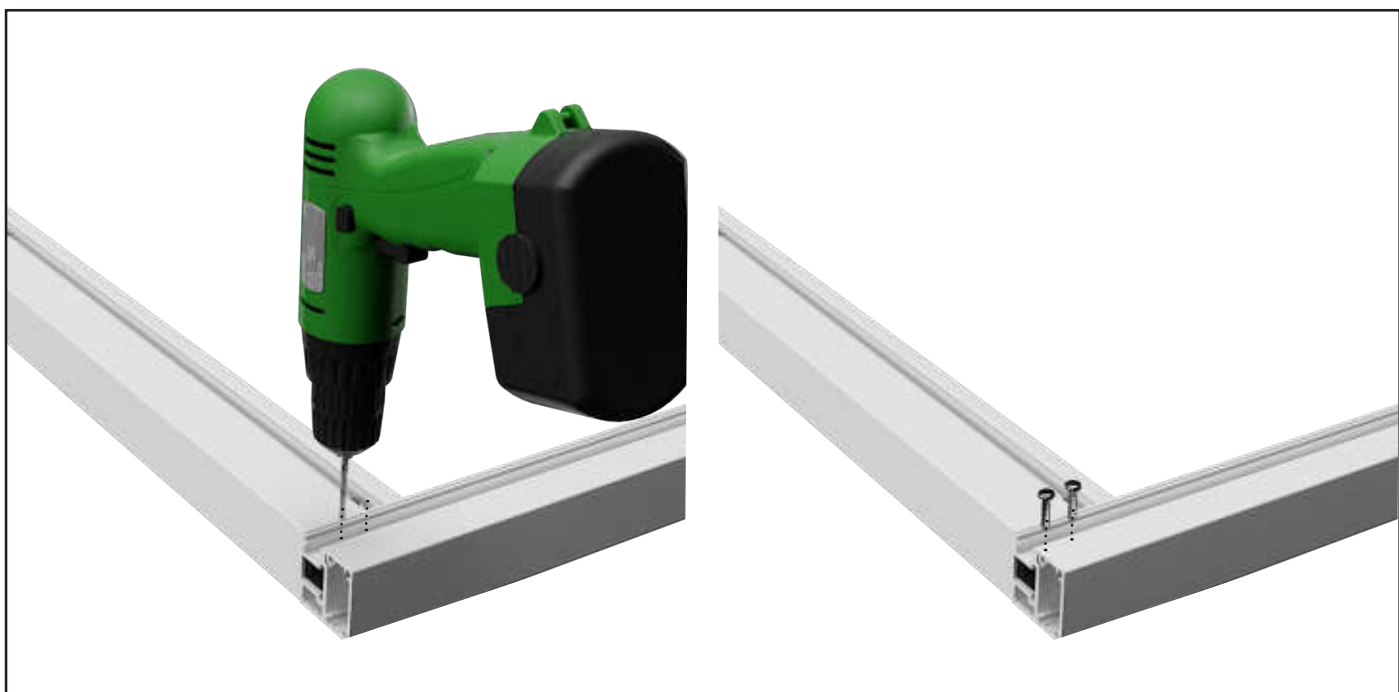
4 Secure with three self-drilling wafer screws per Gate Infill within the screw channel.



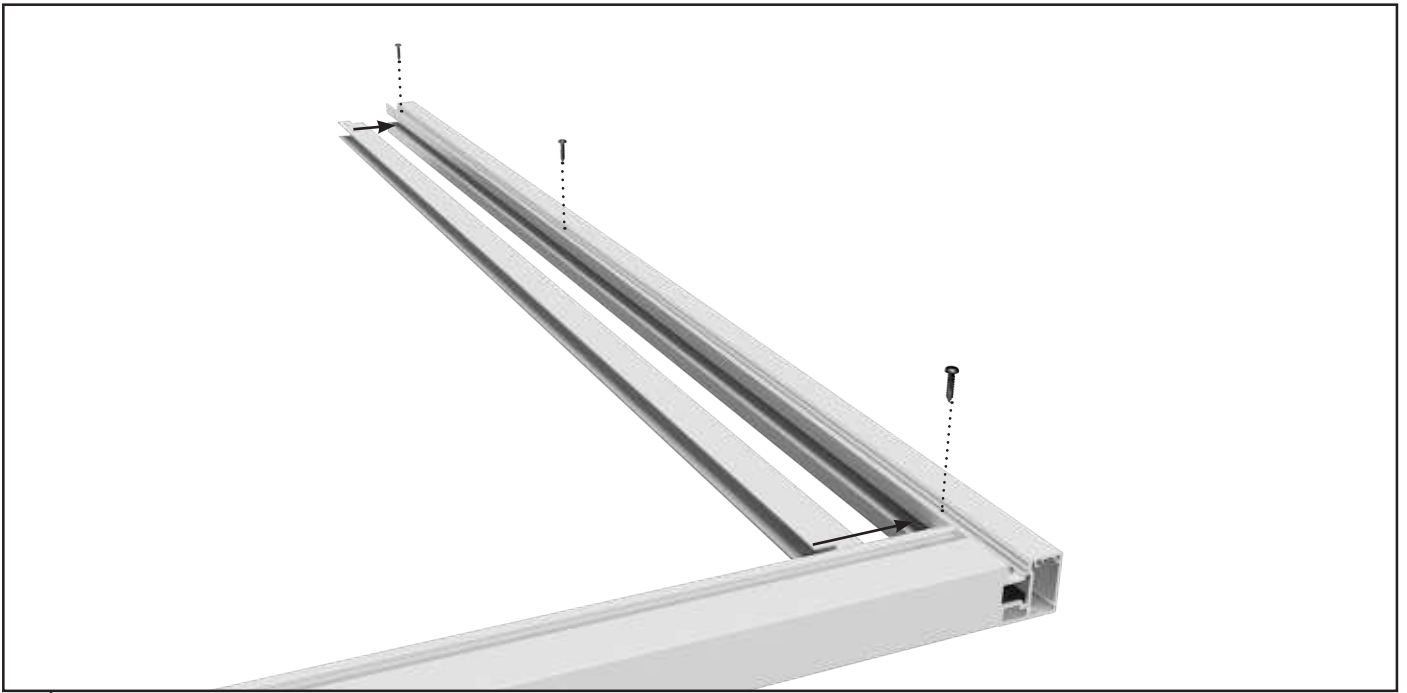
5 Attach the PVC 38mm x 38mm Bottom Slat Rail centrally to the aluminium Mid Rail through the slotted slat holes by pre-drilling a 4mm hole and affixing with 3 x Wafer Screws.



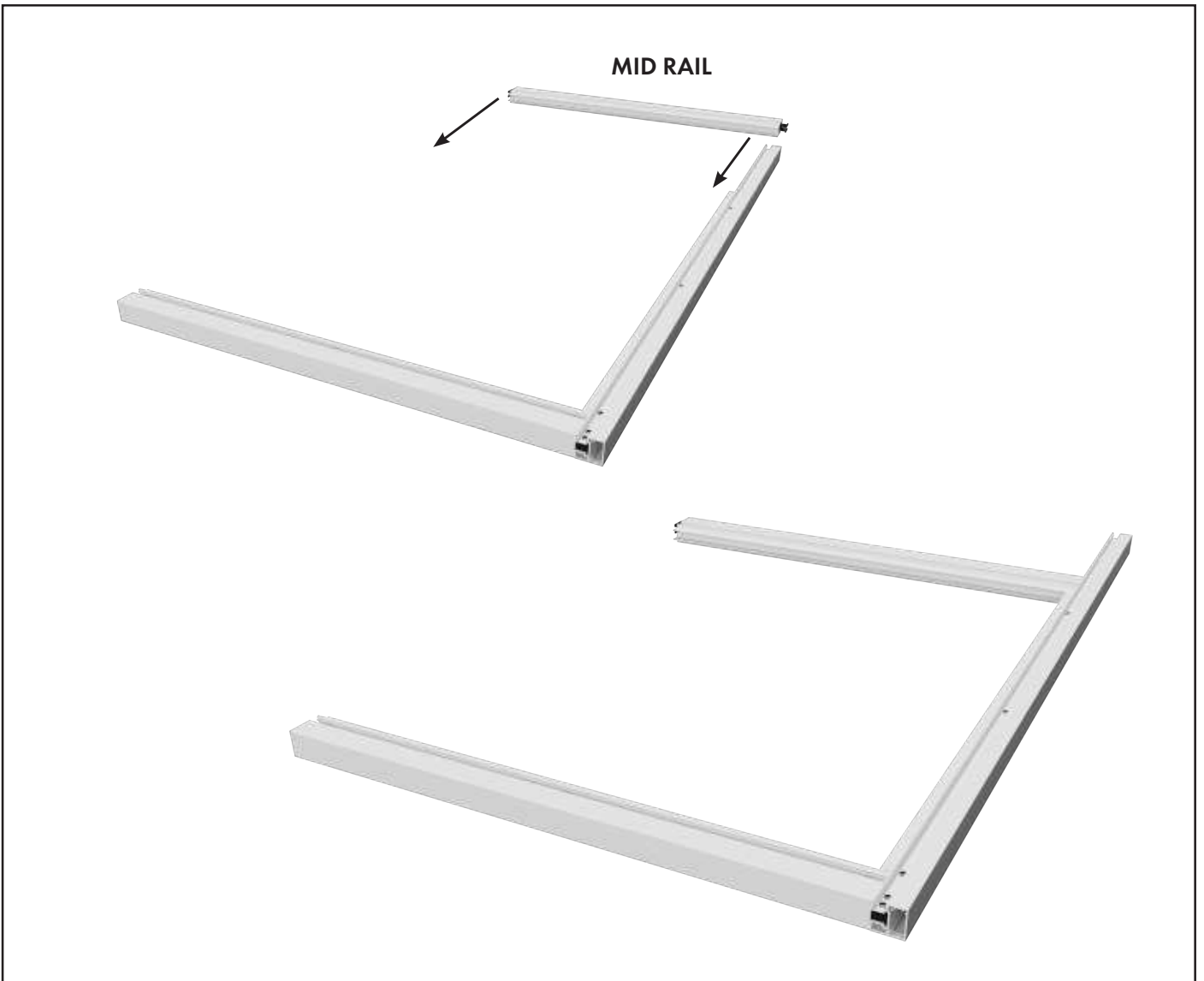
- 6 Slide the Bottom Rail with the single Joiner Block onto the Gate Side Frame, ensuring the Bottom Rail is flush with the bottom on the Gate Side Frame.



- 7 Pre-drill two 5mm holes through the Gate Side Frame screw channel and Joiner Block.
Affix two 12G x 25mm long panhead screws per Joiner Block.

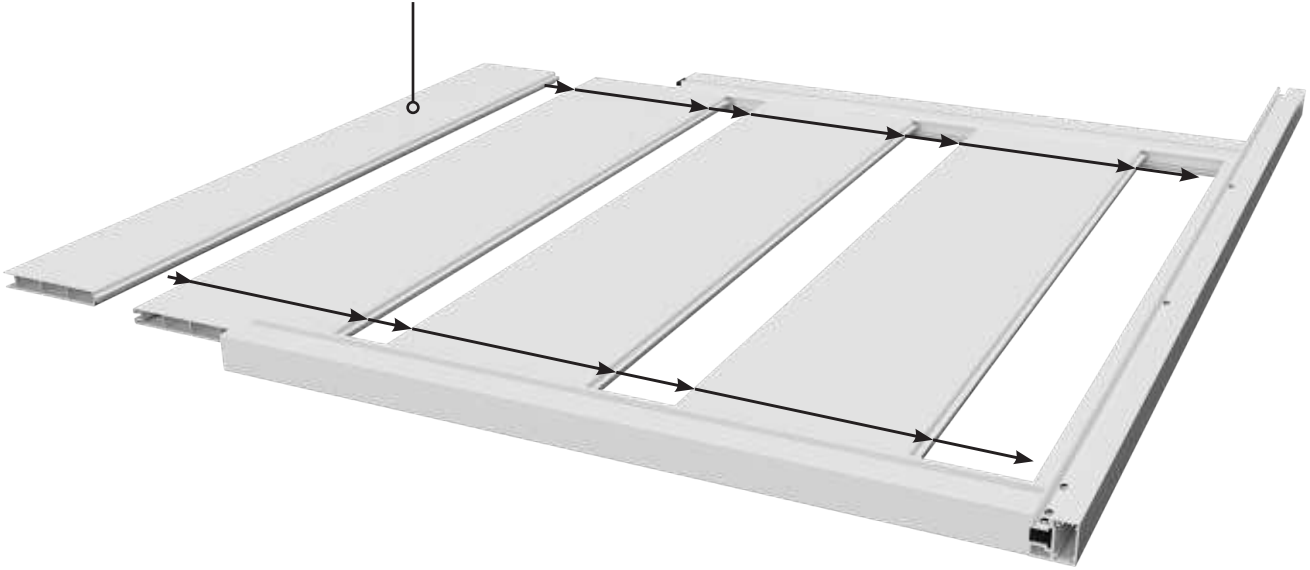


8 Insert Infill for PVC into the first Gate Side Frame and affix using the Self-drilling Wafer Screws.

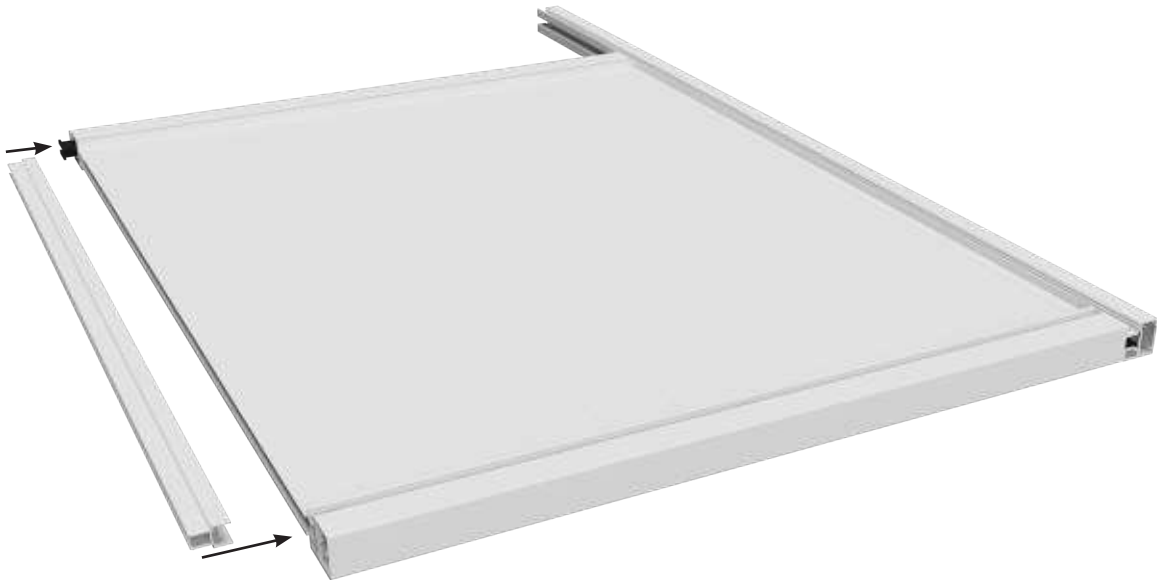


9 With the Infill for PVC facing down, slide the Mid Rail onto the Gate Side Frame until the Mid Rail Infill meets the Gate Side Frame Infill

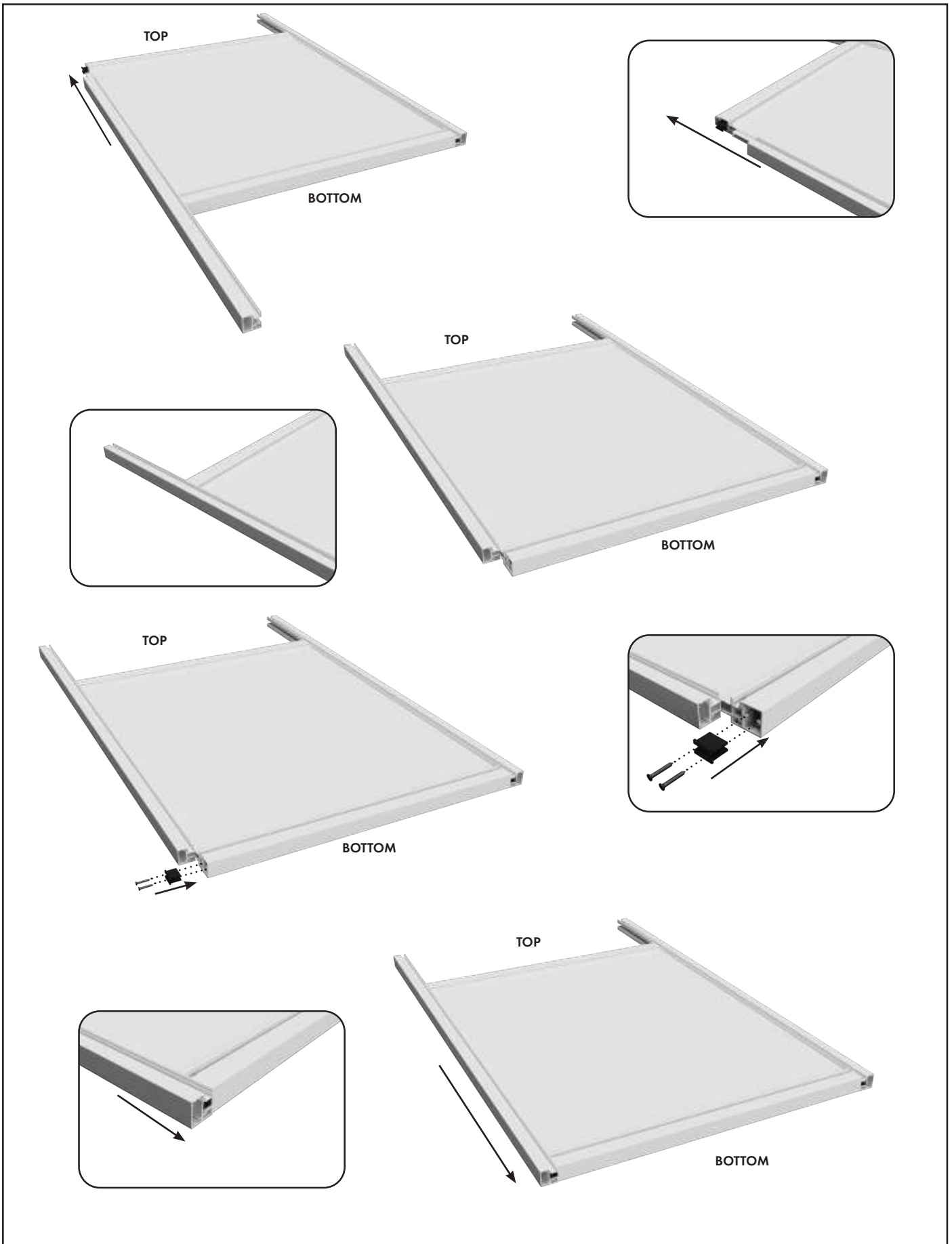
Last panel may be width adjusted by removing length from the groove end.



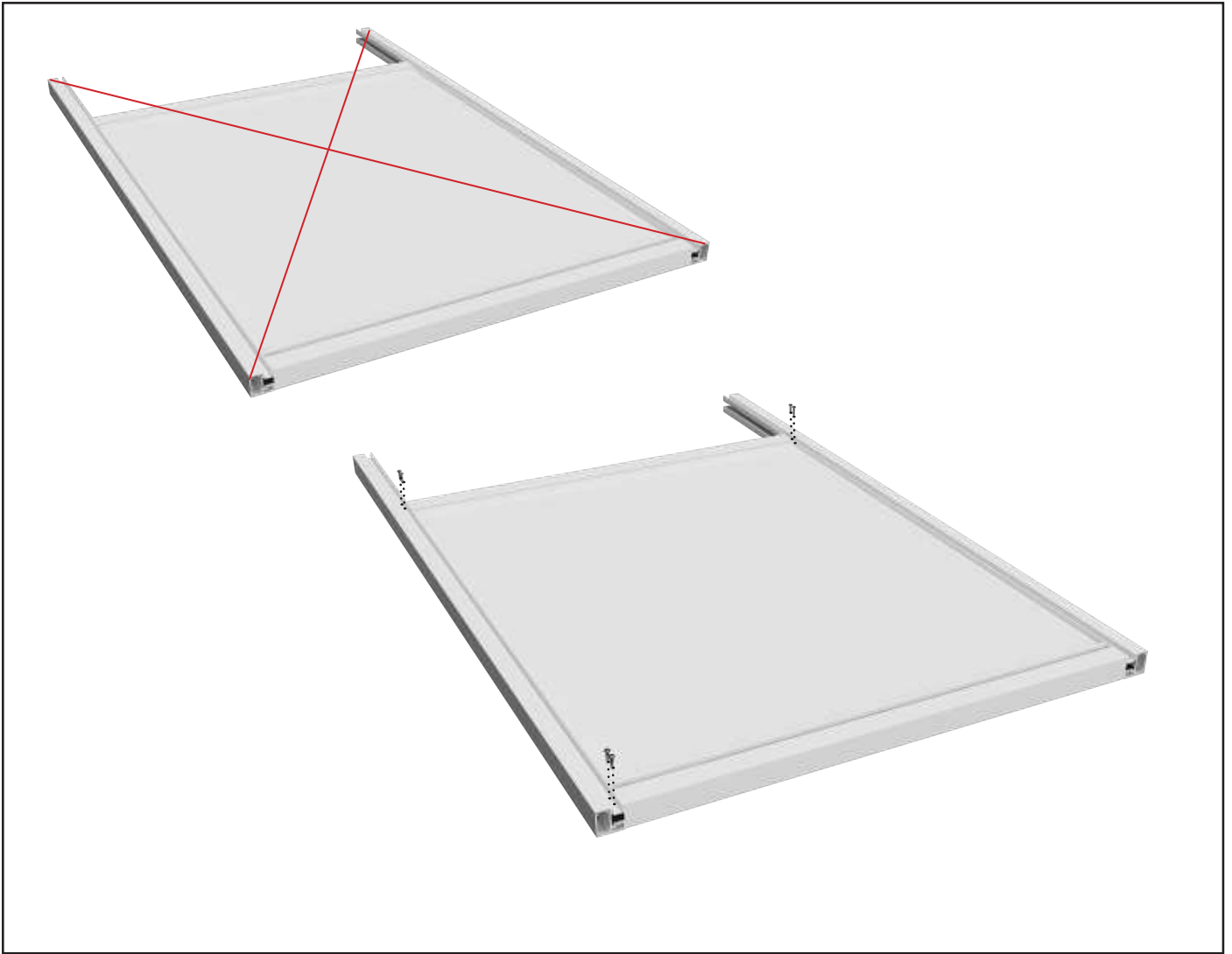
- 10 Leading with the tongue of the first full PVC Infill Panel, slide all PVC Infill Panels into the Infill Channels, ensuring all tongue and groove joints are fully engaged. Complete this step by sliding the final width-adjusted PVC Infill Panel into position.



- 11 Position the Infill for PVC over the last PVC panel and align with the edge of the Bottom and Mid Rail.



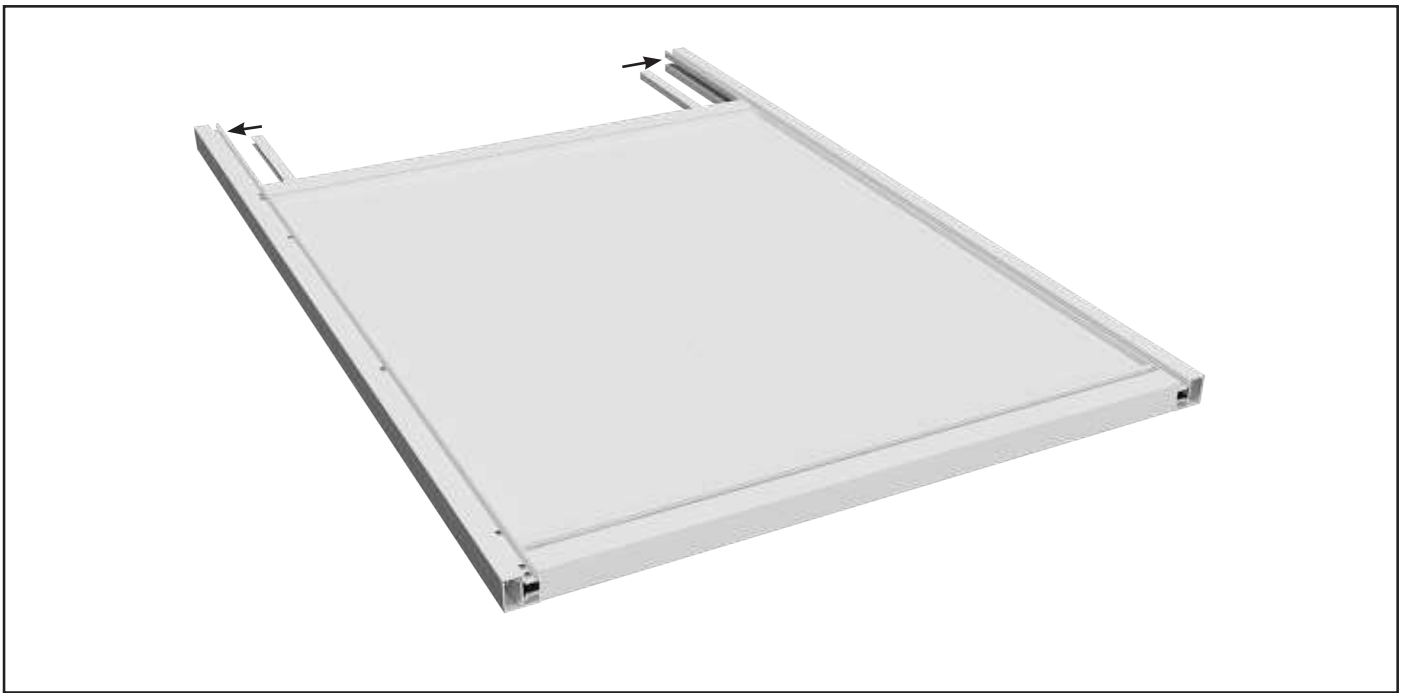
- 12 Slide the remaining Gate Side Frame onto the Infill for PVC and onto Mid Rail Joiner Block. Slide side frame slightly beyond the Mid Rail to allow room to install Joiner Block to the Bottom Rail. Once block installed, slide Side Frame back down to connect Side Frame to Bottom Rail. The Gate Side Frame should align flush with the Bottom Gate Rail.



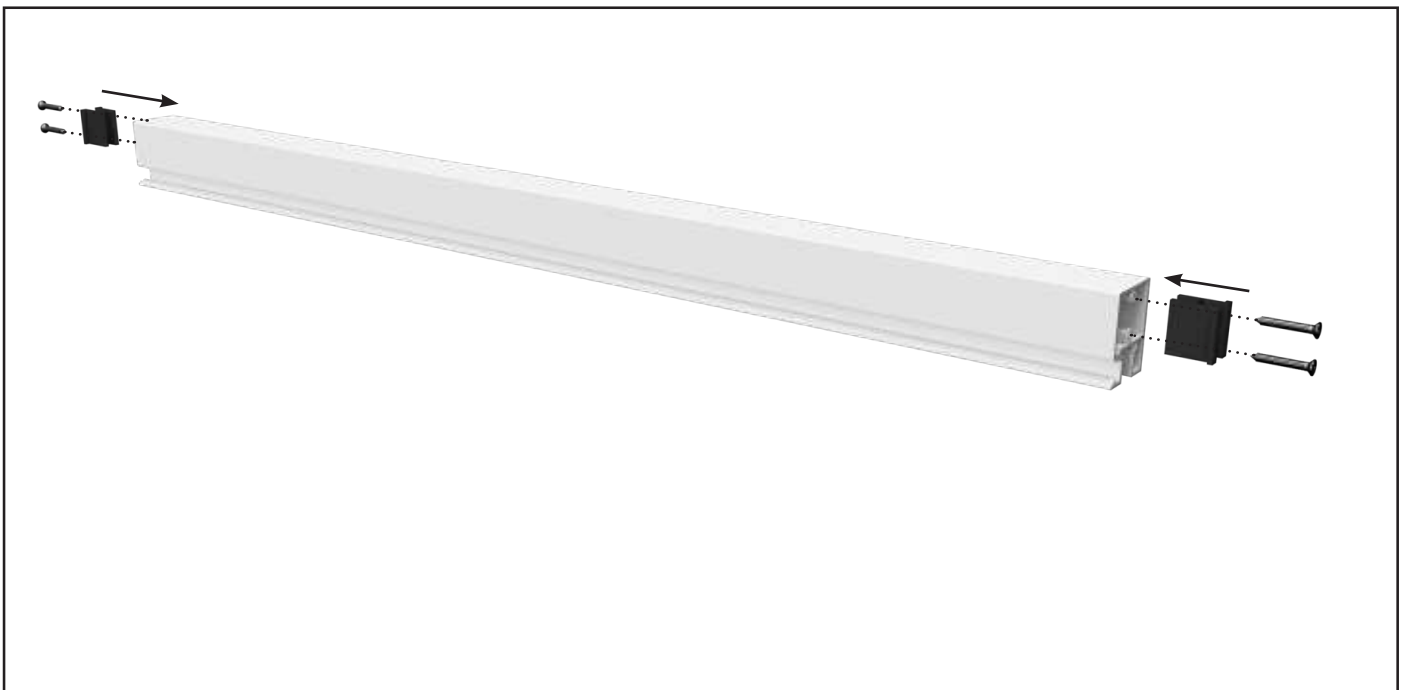
- 13 Ensure the gate is square. Pre-drill two 5mm holes through the Gate Side Frame screw channel and Joiner Blocks at the Mid Rail and remaining Bottom Rail.
Affix two 12G x 25mm long panhead screws per Joiner Block



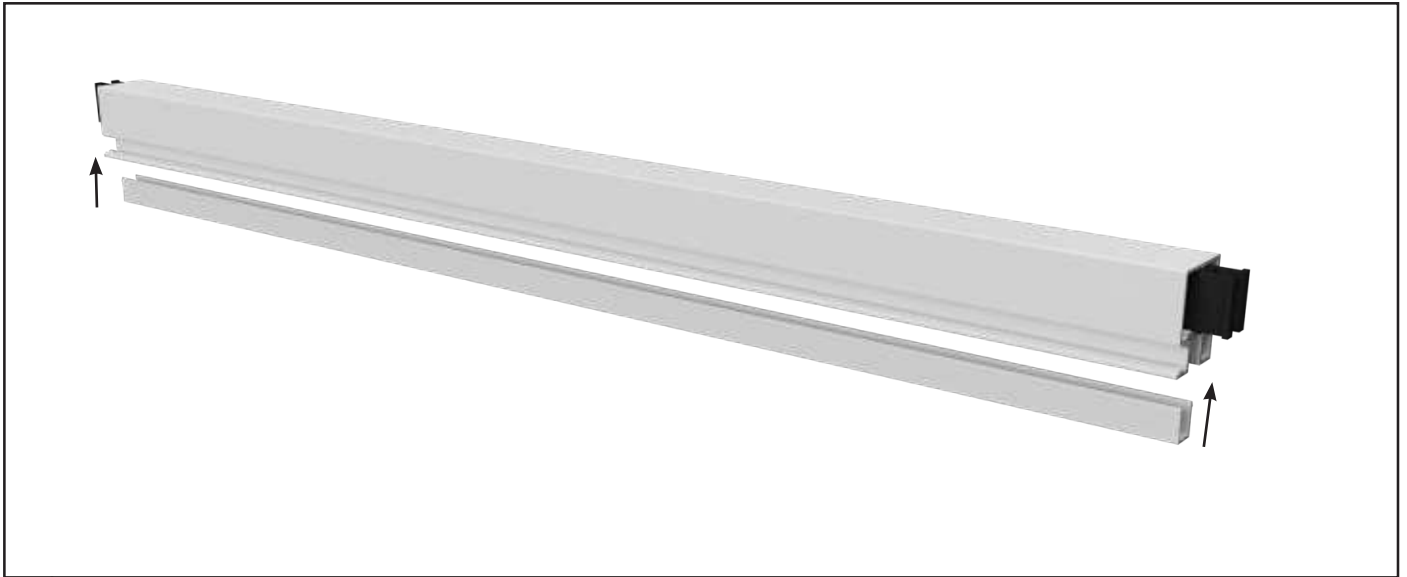
- 14 Affix the Infill for PVC through the Gate Side Frame screw channel using Self-drilling Wafer Screws.



15 Insert the 2 shorter length Gate Infills into the Gate Side Frames.



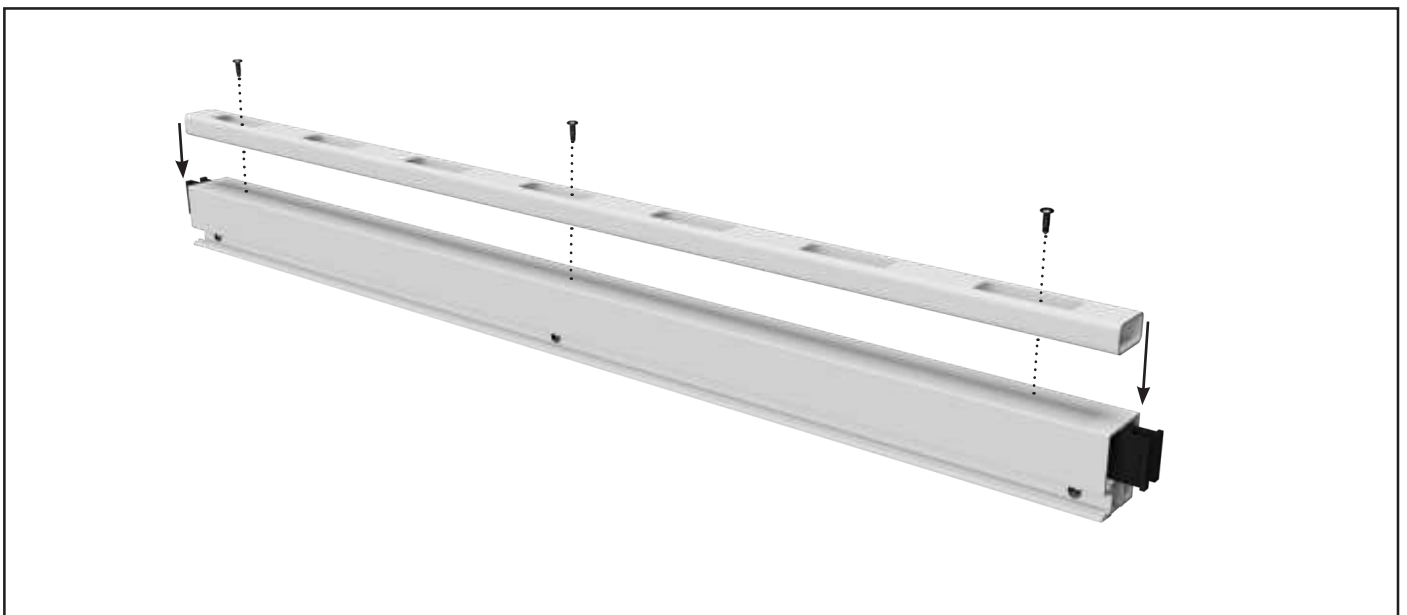
16 Attach Joiner Blocks to both ends of the Top Rail with two screws per Joiner block using a Phillips head #3 driver bit on a low-torque/low-speed cordless drill setting



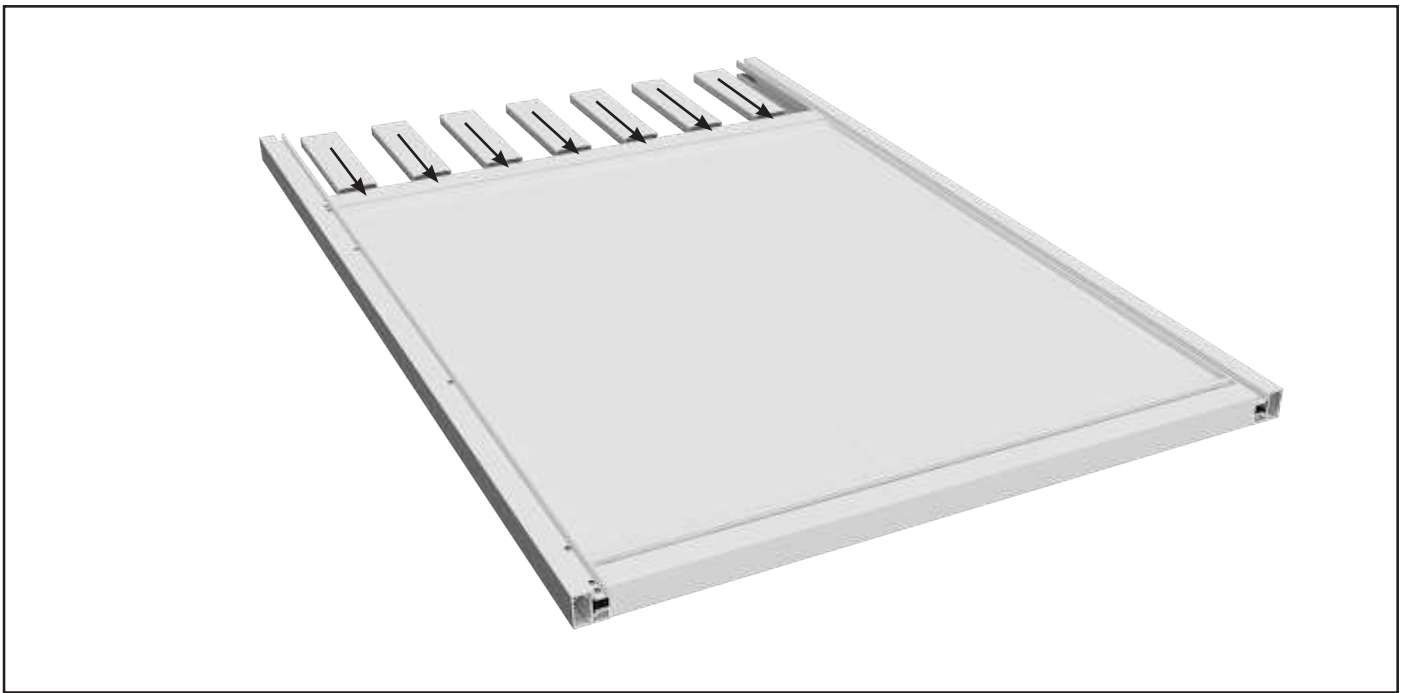
17 Insert Gate Infill into the Top Rail



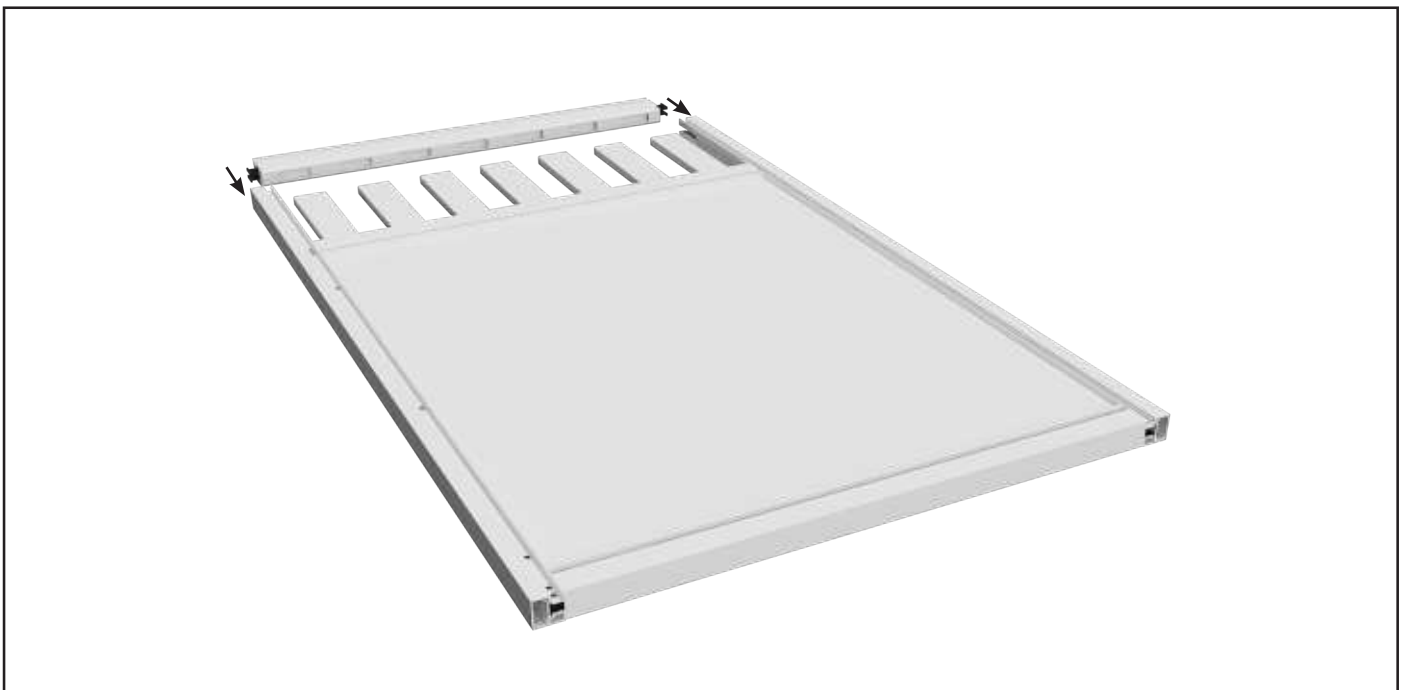
18 Secure with Gate Infill three self-drilling wafer screws within the screw channel.



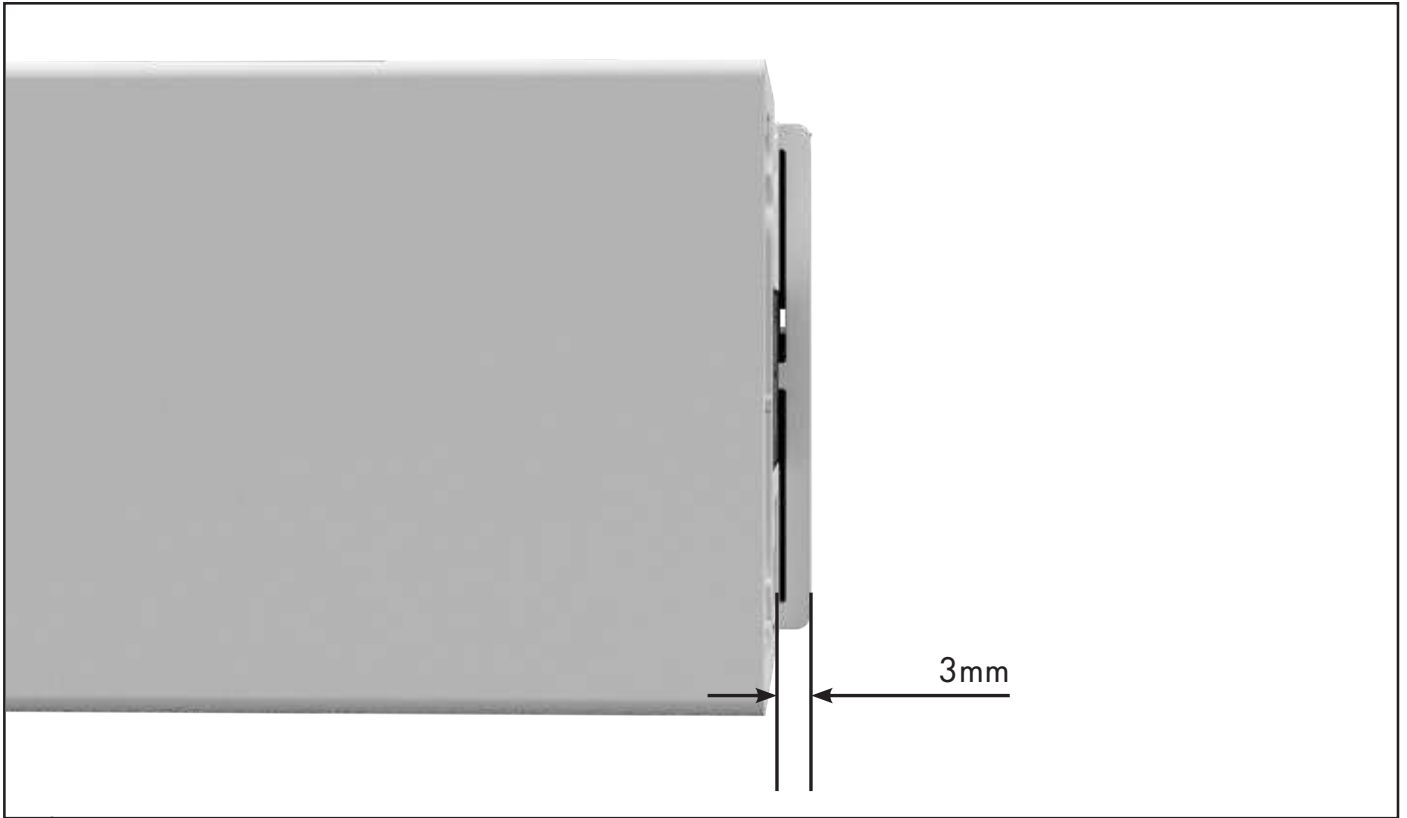
19 Attach the PVC 22m x 38mm Top Slat Rail centrally to the aluminium Top Rail through the slotted slat holes by pre-drilling a 4mm hole and affixing with 3 x Wafer Screws.



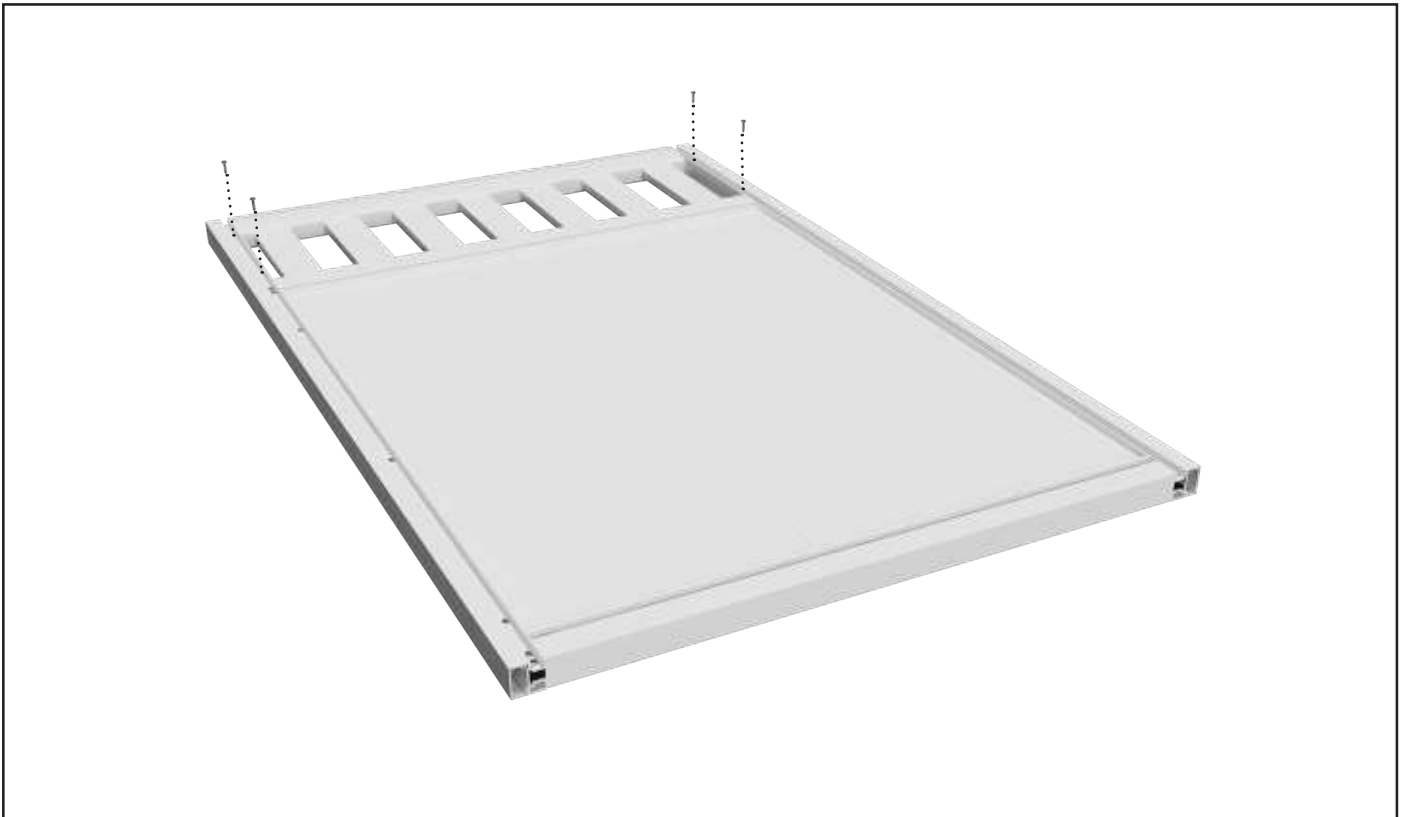
21 Insert all PVC 76mm Slats into the PVC Bottom Slat Rail.



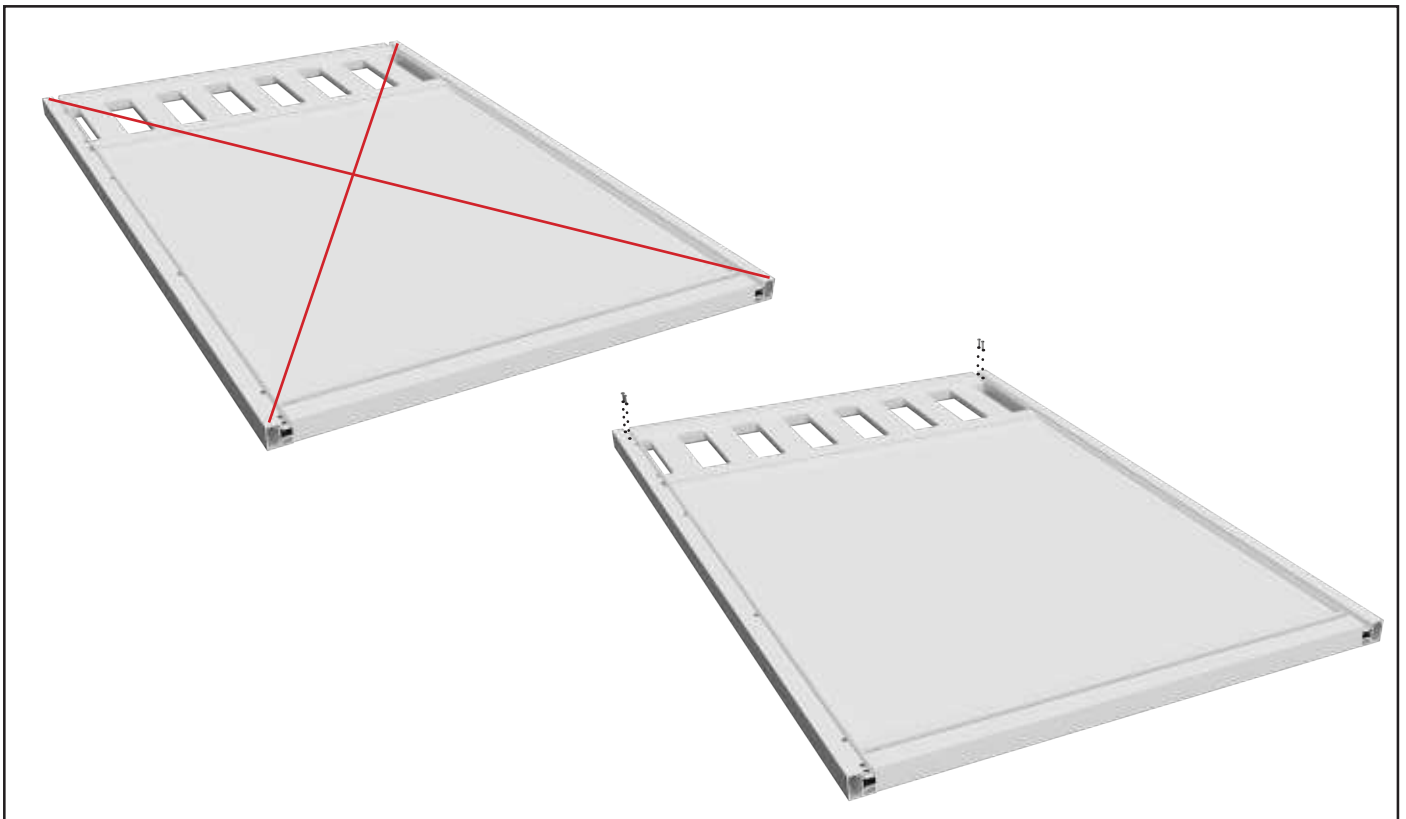
22 Engage all PVC 76mm Slats with the PVC Top Slat Rail that is connected to the aluminium Top Rail and slide the Top Rail onto the Gate Side Frames.



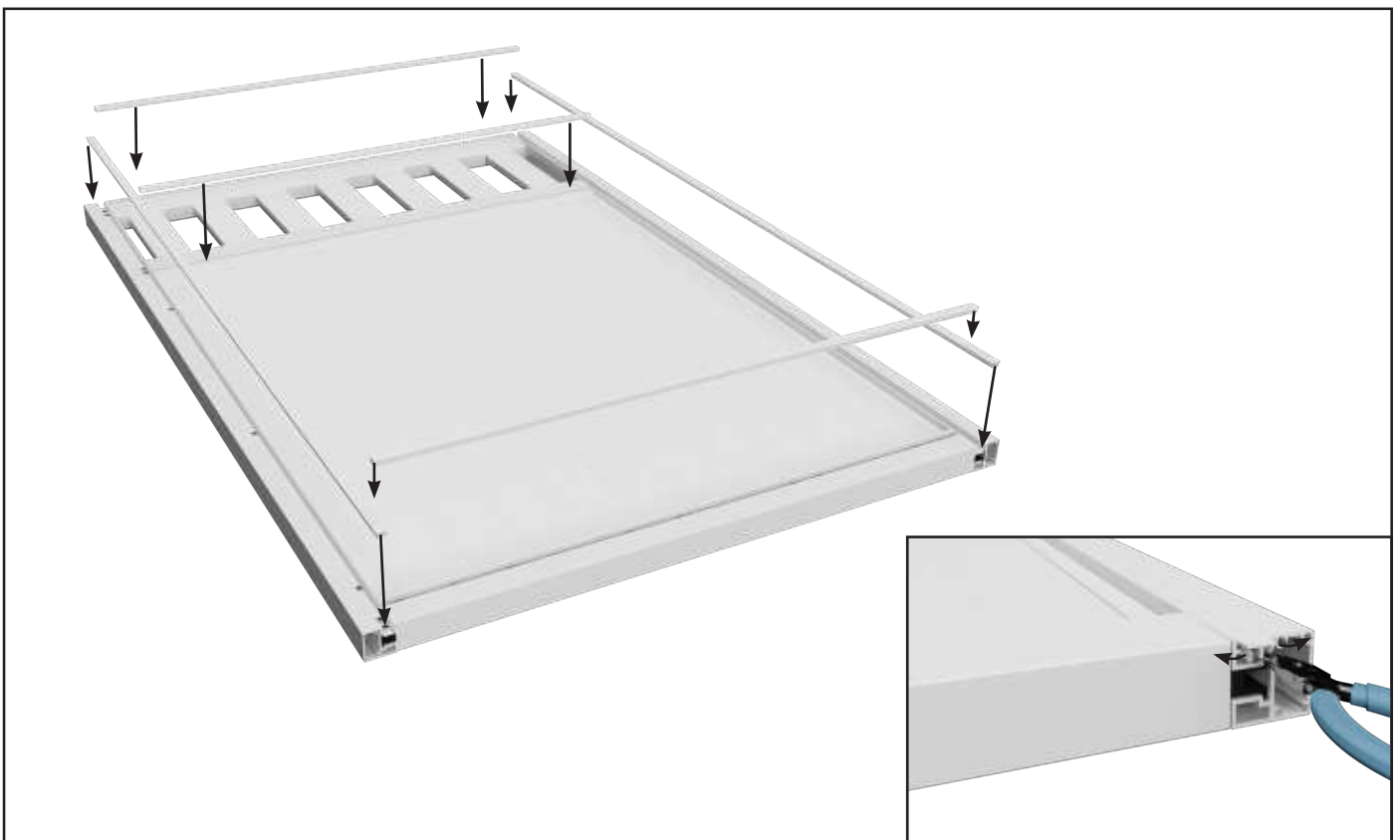
23 Ensure a gap of 3mm remains between top of Top Rail and top of Gate Side Frames for Gate Top Caps.



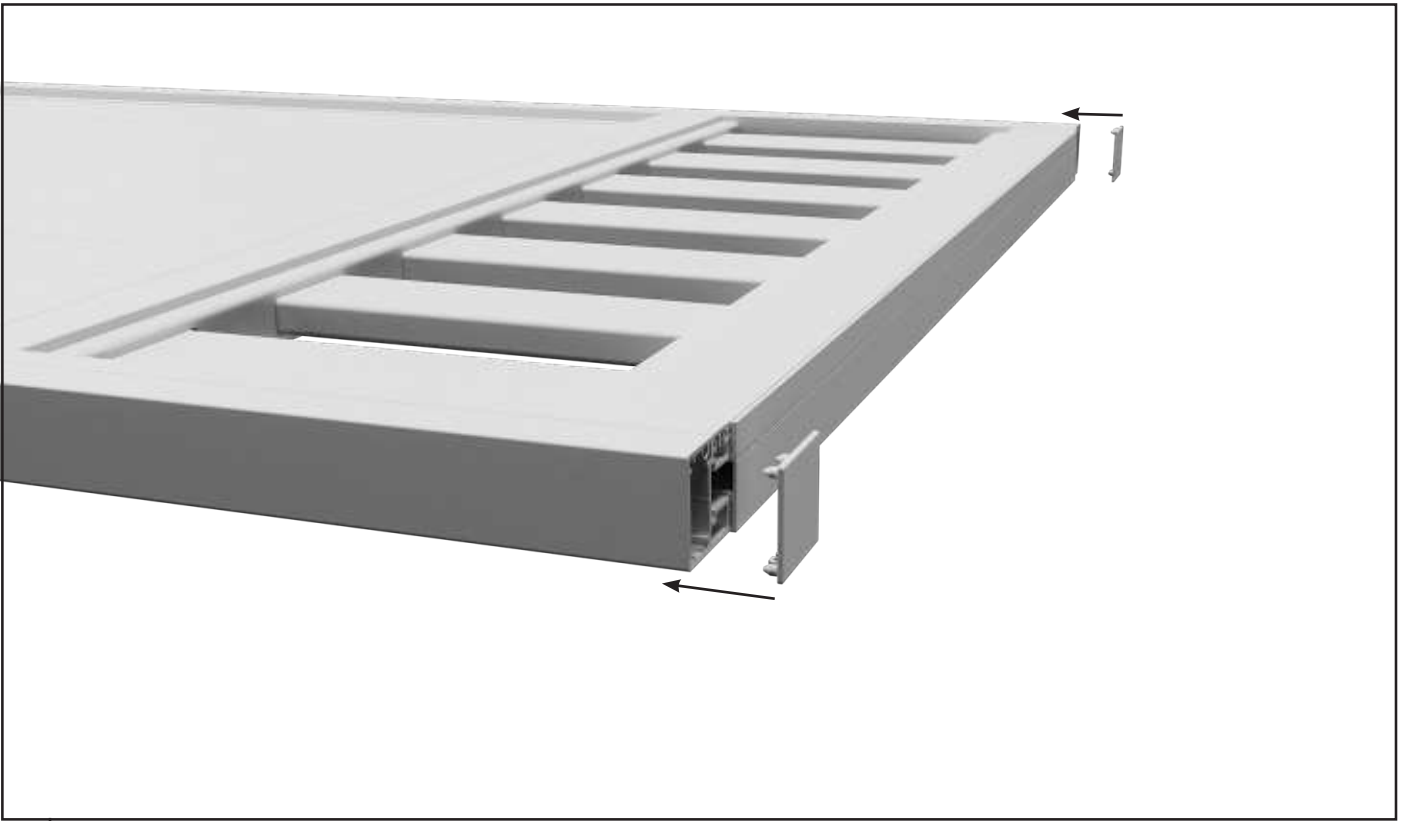
24 Affix the 2 shorter Gate Infills using 2 x self-drilling wafter screws each side through the Gate Side Frame screw channel



- 25 Ensure the gate is square. Pre-drill two 5mm holes through the Gate Side Frame screw channel and Joiner Blocks at the Top Rail.
Affix two 12G x 25mm long panhead screws per Joiner Block.



- 26 Snap the Screw Covers into the Top, Mid and Bottom rails, and insert the two Screw Covers to the Gate Side Frames.
Once inserted, bend the Screw Cover legs as required to achieve a tight insert.



27 Insert the two Top Caps



● Gate Fabrication complete.