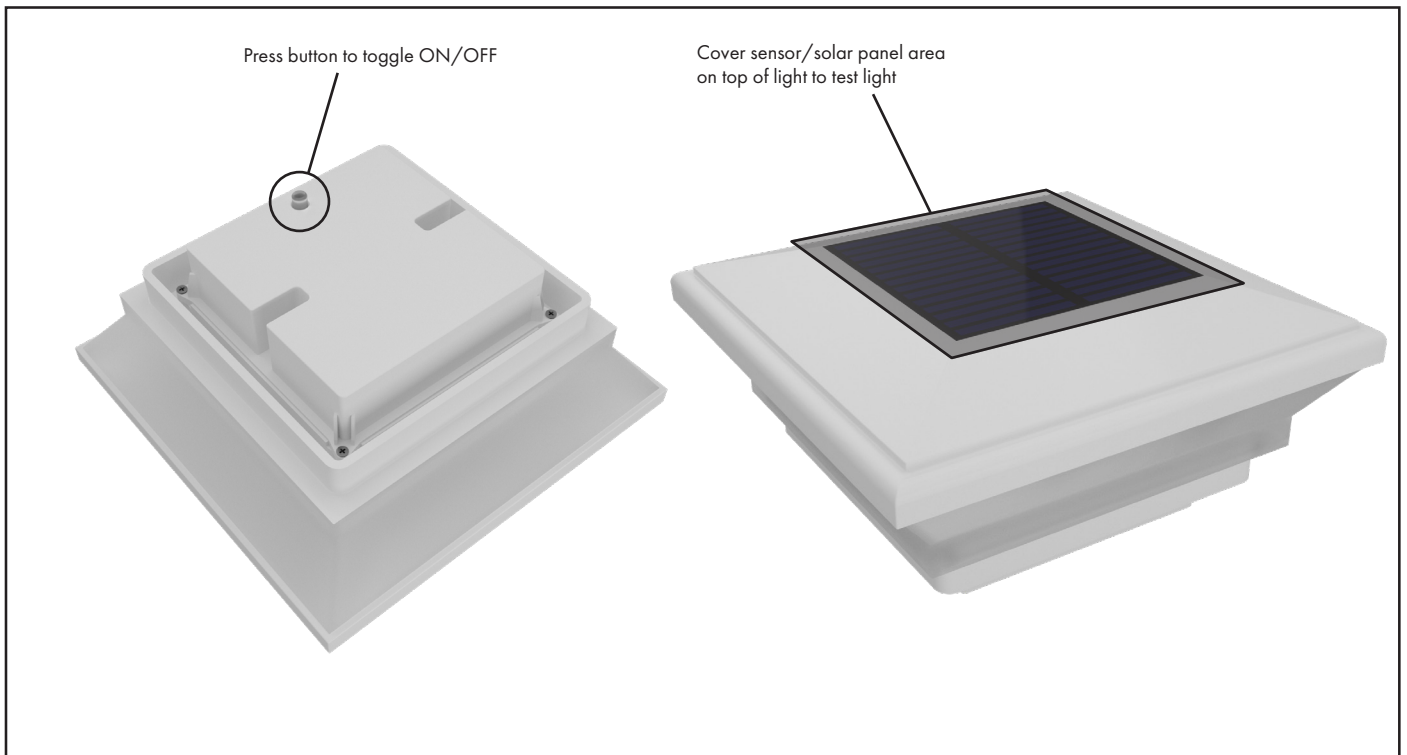
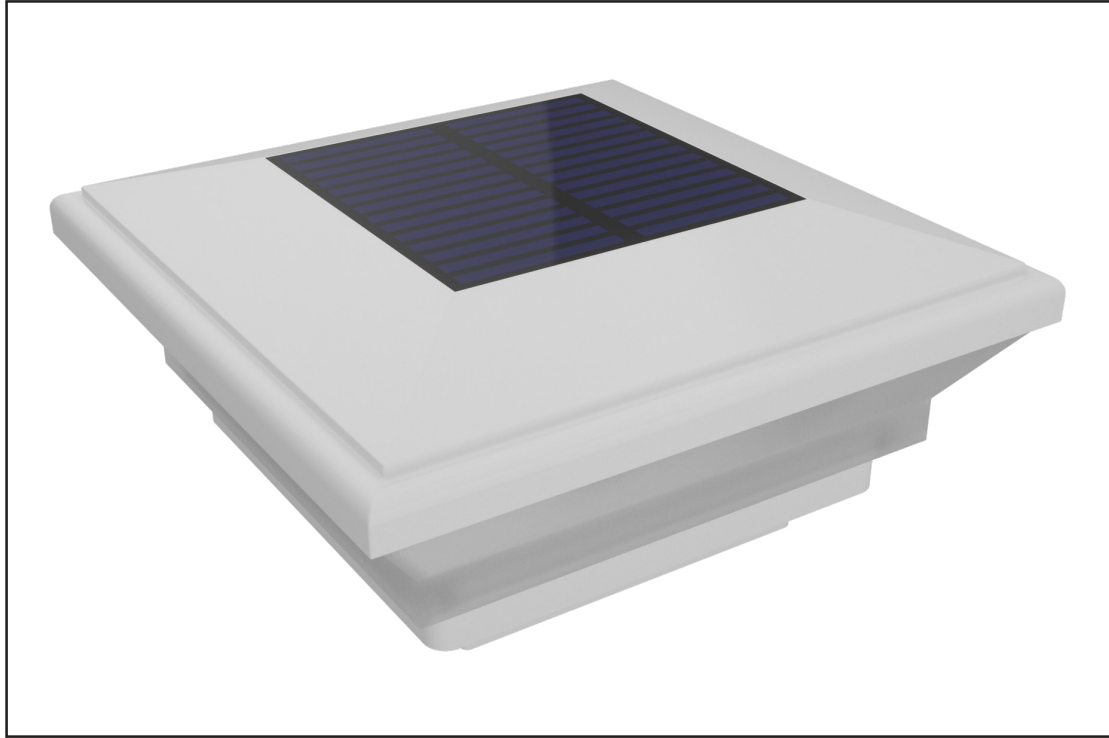




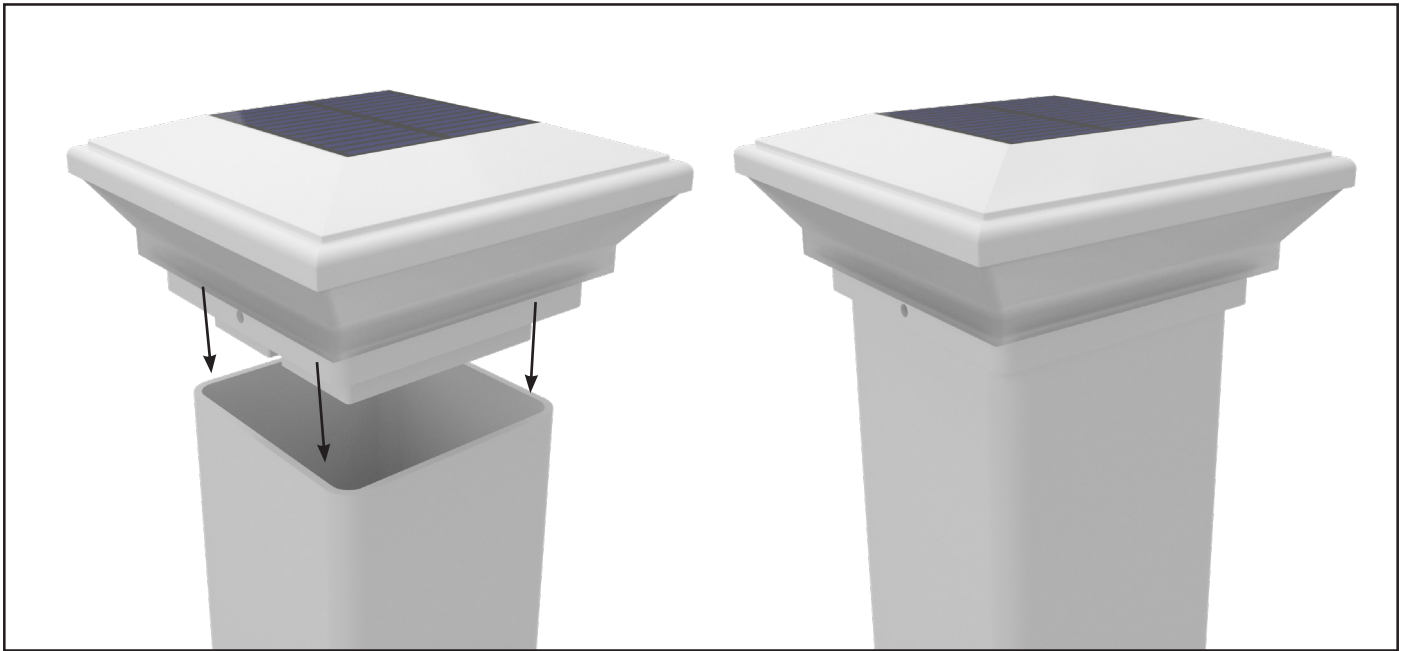
V1

# HAMPTONS FENCE SOLAR LIGHT

## INSTALLATION OVERVIEW



- TIP** Before starting installation, ensure light is switched on. Press the button on the underside of the light and cover the sensor/solar panel on the top of the light.
- If light does not illuminate, press button again and repeat process.
  - If light does not turn on a second time, consider leaving cap in the sun to charge for several hours before trying again.
  - If light fails to illuminate after charging, consider replacing batteries and charging before testing again.



1 Insert solar light into top of open post.



2 Align screw and self tapping screw and cover-cap with hole in solar light. Using a drill, screw through hole into post.  
Repeat on opposite side.



3 Close cover over caps to hide screw heads and finish.